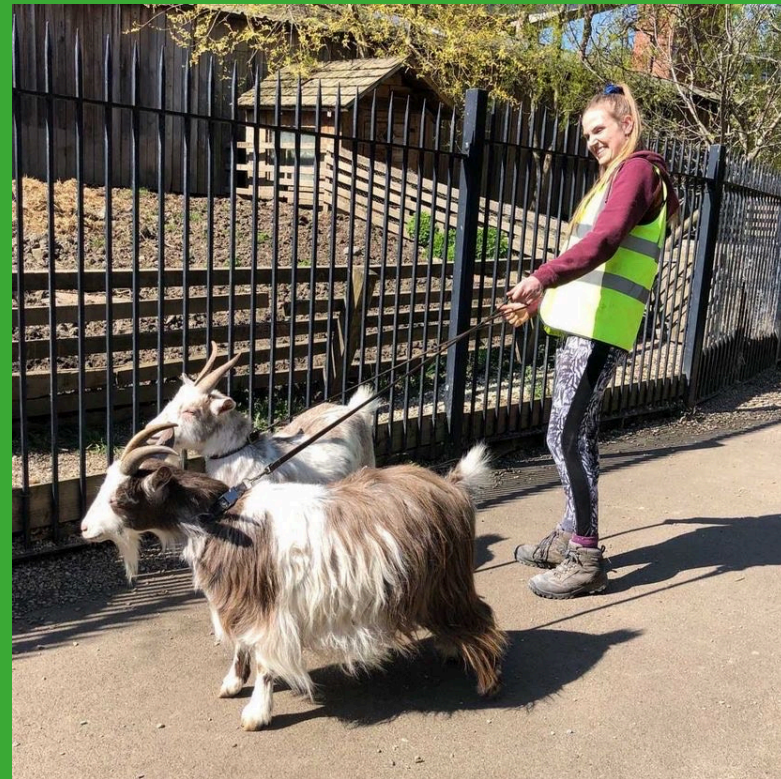


# CORPORATE VOLUNTEERING AT OUSEBURN FARM







“For me, this is what CSR volunteering is all about. Choosing a project that has a real sense of purpose in the community. Raising money is important, but volunteering on a regular basis gives a sense of commitment and partnership. Given the amount Ouseburn Farm does for the community as a whole, this is the most satisfying and worthwhile project I have worked on. I would be more than happy to volunteer again.”

**VOLUNTEERING AT OUSEBURN FARM IS A FANTASTIC WAY TO GET OUTDOORS WITH YOUR COLLEAGUES AND DO SOMETHING GREAT FOR YOUR COMMUNITY. OUR VOLUNTEERS HAVE AN AMAZING TIME DOWN ON THE FARM, MUCKING IN WITH ALL MANNER OF TASKS AND PROJECTS AND THEY KNOW THEY ARE MAKING A REAL DIFFERENCE. THERE'S SOMETHING TO SUIT EVERYONE.**

“Well, what can I say about yesterday – absolutely loved it. We had a really strong team who pushed through to ensure we got all the work completed, but still had fun feeding the lambs and walking the goats, as well as holding a beautiful little chick.”





# YOUR QUESTIONS ANSWERED

## WHAT ARE CORPORATE VOLUNTEERING DAYS?

Corporate volunteering days are an opportunity for you and your team to spend time together and have fun while making a huge difference to a much loved local community resource.

## WHAT WILL WE BE DOING

Volunteering activities vary over the year depending on seasons and projects on the farm. You can read some examples on page 6. Alongside morning and afternoon volunteer activities, volunteering days include the following elements: welcome and refreshments on arrival, a tour of the farm, taking our pygmy goats for a walk around the Ouseburn and a choice of animal petting - lambs (in Spring), reptiles, bunnies and guinea pigs.

## HOW BIG DO THE VOLUNTEER GROUPS NEED TO BE?

We are able to accommodate up to 12 volunteers in one day.

## WHAT SHOULD WE WEAR?

You and your team may spend most of the day outdoors in potentially wet and muddy conditions - come prepared with wellies, waterproofs and old clothes (plus suncream if it's sunny!). Ouseburn Farm will provide gloves and all other PPE.

You will also need to bring clean footwear to wear indoors, and a change of clothes to return home in.



## HOW MUCH DOES IT COST?

We charge £30 per person (excluding VAT) with a minimum cost of £300. This means if there are only 5 people in your team, we would still charge £300.

The fee covers staff time, materials, and the use of our equipment. It also helps us to look after our animals and keep our community farm free and accessible to all.

## WHERE CAN WE GET LUNCH?

For an additional charge your team can add on a lunch buffet from our on site cafe, Cafe Beam, ran by the incredible Smile for Life Children's Charity. Alternatively, we can recommend a variety of lovely local businesses serving food right on our doorstep.

## HOW DO WE BOOK?

To book a slot for your team, please email [volunteering@ouseburnfarm.org.uk](mailto:volunteering@ouseburnfarm.org.uk)

Once we have agreed a date and how many are in your group, we will ask you to complete a booking form. Your invoice can then be paid by BACS or cheque prior to your corporate volunteering day.

## IS THERE ANYTHING ELSE WE NEED TO KNOW?

Due to high demand, we offer first refusal on all our volunteering opportunities to our Business Partners and Supporters. If you'd like to learn more about partnership opportunities at the Farm, please contact Fundraising and Communications Lead, Jenny Urwin on [jennifer.urwin@tynegroup.org.uk](mailto:jennifer.urwin@tynegroup.org.uk)

For any other questions, please email Volunteer Coordinator, Sarah Smith on [sarah.smith@ouseburnfarm.org.uk](mailto:sarah.smith@ouseburnfarm.org.uk)

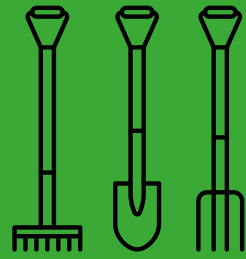
A decorative orange brushstroke graphic at the bottom of the page, resembling a stylized horizon or a splash of paint.



# EXAMPLE CORPORATE VOLUNTEERING DAYS

## ALLOTMENT & GARDEN

Help us with our seasonal allotment and garden tasks. You and your team could be helping turn soil and compost, preparing beds, planting seeds, weeding and wood chipping foot paths or harvesting fruit and vegetables.



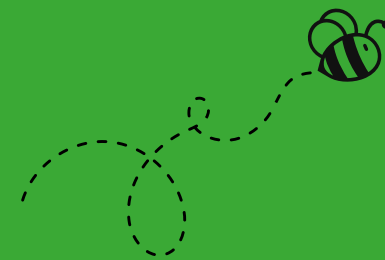
## ORCHARD

Help us maintain our Orchard. You and your team could be mulching our tree bases, harvesting fruit, tree pruning, litter picking or planting bulbs.



## BEE DAYS

Help our volunteer Bee Keeper Barbara remake and repair brood boxes, build new hives, make beeswax food wraps to sell in our shop or even help process honey!



## PAINTING

Help us with with painting tasks around the farm. This could be giving our outdoor furniture a refresh or our barn a fresh lick of paint, treating the wood on our chicken house or painting our metal fencing.



## SPECIAL PROJECTS

Each year there are a number of one-off projects which corporate volunteers can help with. These vary according to the needs of the farm but have included transforming our duck pond, building a poly-tunnel and redecorating our classrooms. Please ask for details when you discuss volunteering with the team.

